

SUSPENSIONS

Introduction to **Type 02**

Double Cable

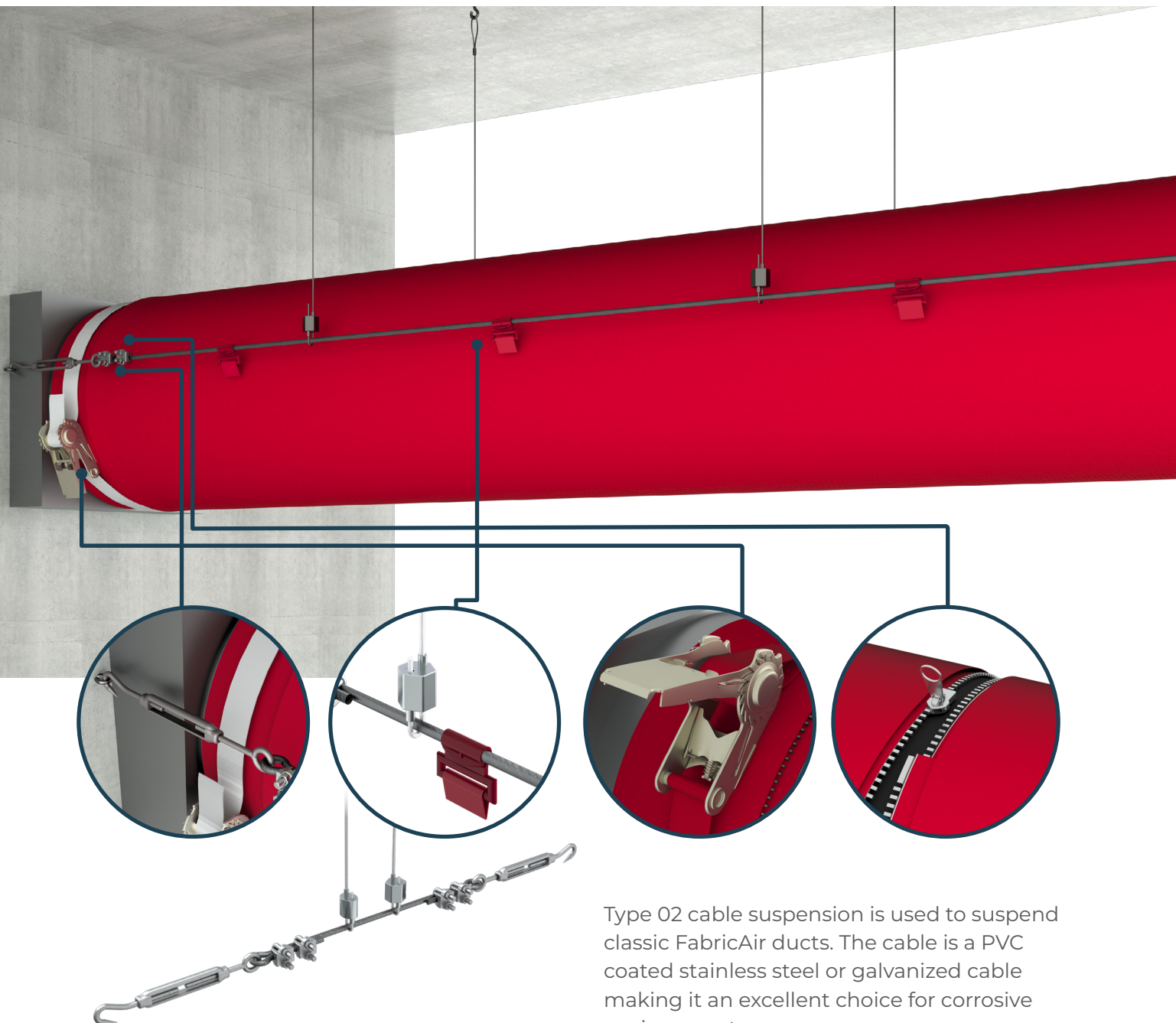
- Simple on straight runs
- Great for larger diameters
- Available in galvanized and stainless steel

Click or Scan

Click or Scan

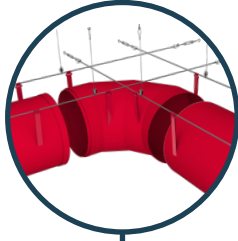
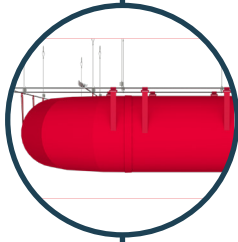
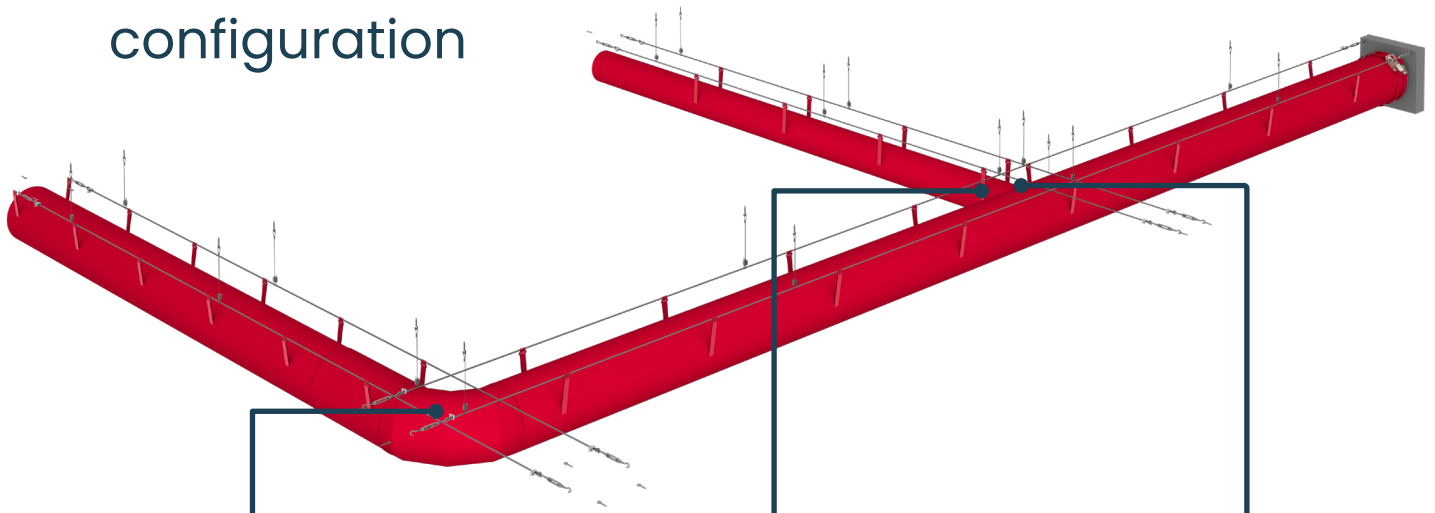
Animation

Drawings



Type 02 cable suspension is used to suspend classic FabricAir ducts. The cable is a PVC coated stainless steel or galvanized cable making it an excellent choice for corrosive environments.

Example of duct system configuration



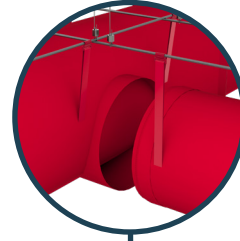
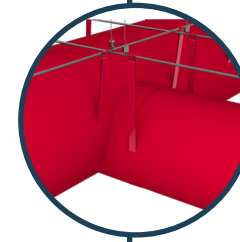
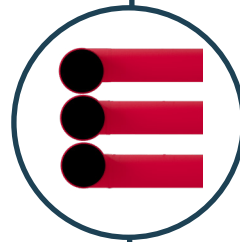
Elbows

We provide custom elbows in any degree and size. .



Reductions

Concentric and eccentric reducers are available. Top-aligned are the standard for Type 02 Cable Suspension.

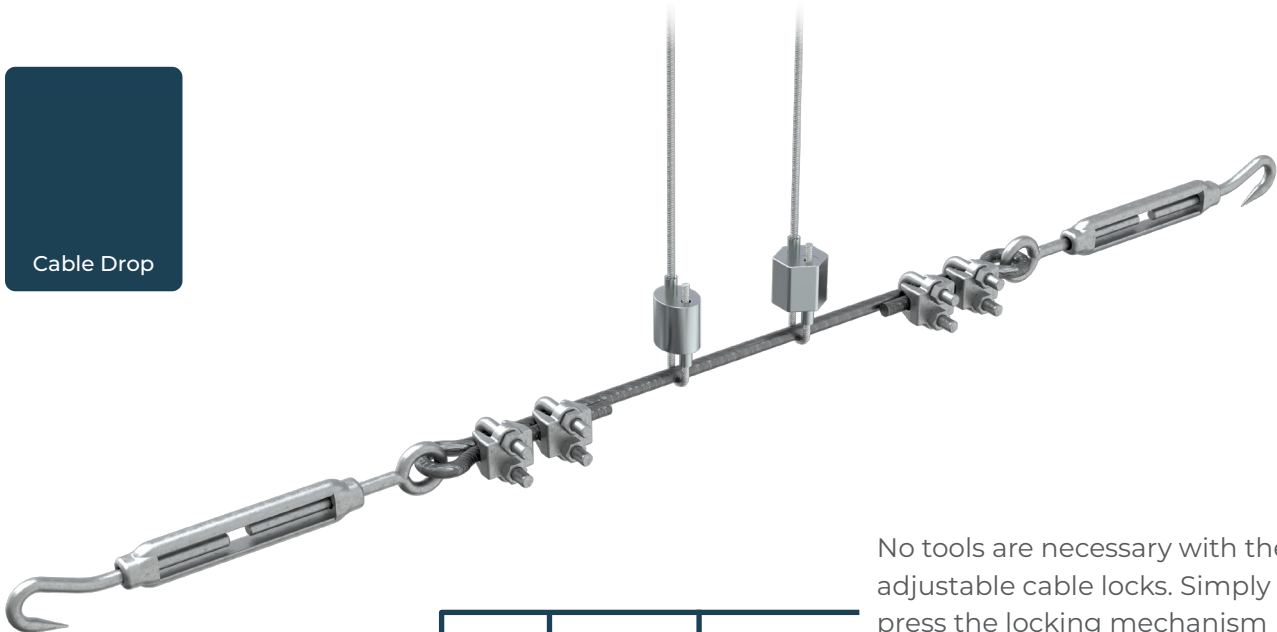
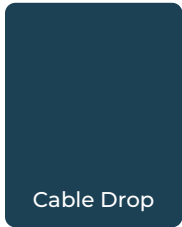


Branches

Concentric and eccentric Branch take-offs are available. Top-aligned are the standard for Type 02 Cable Suspension.

Adjustable Cable Drop for Type 02

Type 02, uses two cables that runs along the sides of the duct at the 9 and 3 o'clock positions and anchors to the building structure at either end. Adjustable Cable Drops are hung from the building structure along the length of the system and support the cable to prevent sagging.

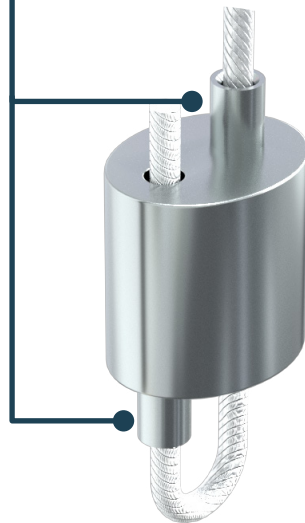


No tools are necessary with the adjustable cable locks. Simply press the locking mechanism down and adjust.

Adjustable Cable Lock for SS suspension selection



Adjustable Cable Lock for GV suspension selection



Note: There are two types of Adjustable Cables Locks for Type 02. Customer will use only one of them, based on project.