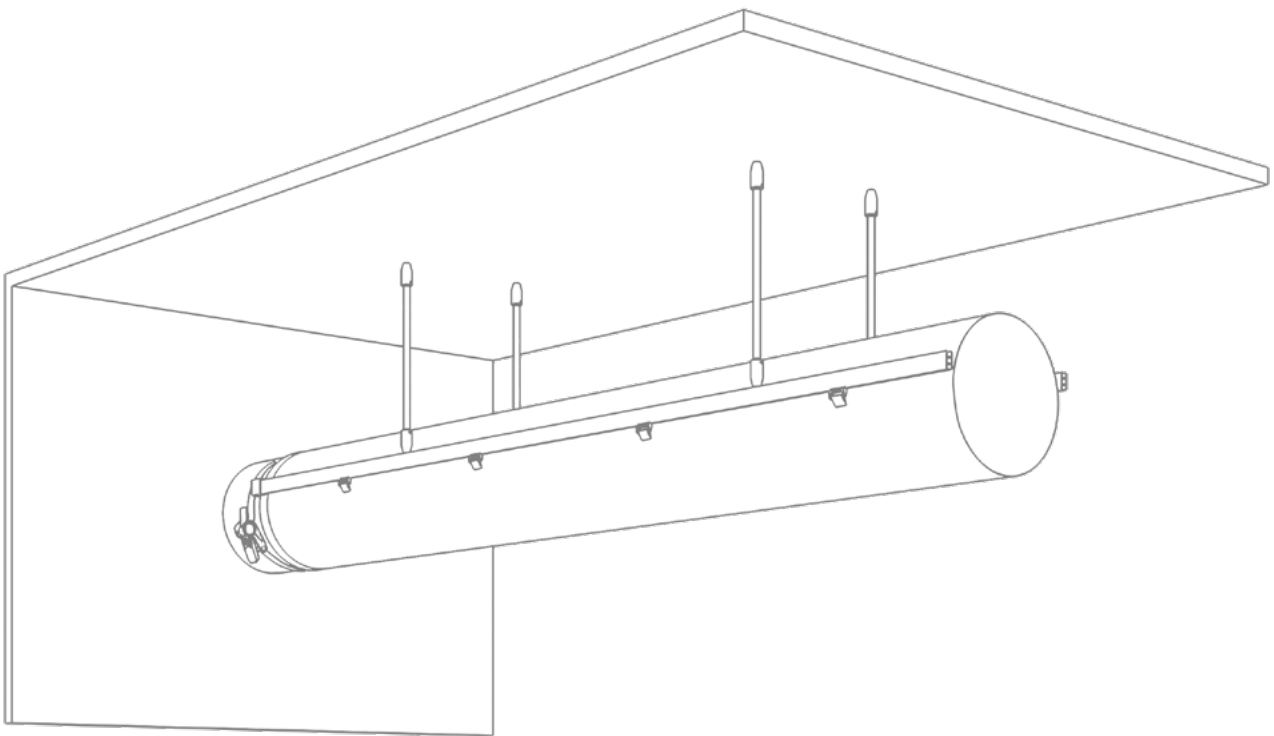


Type 06

Installation Manual



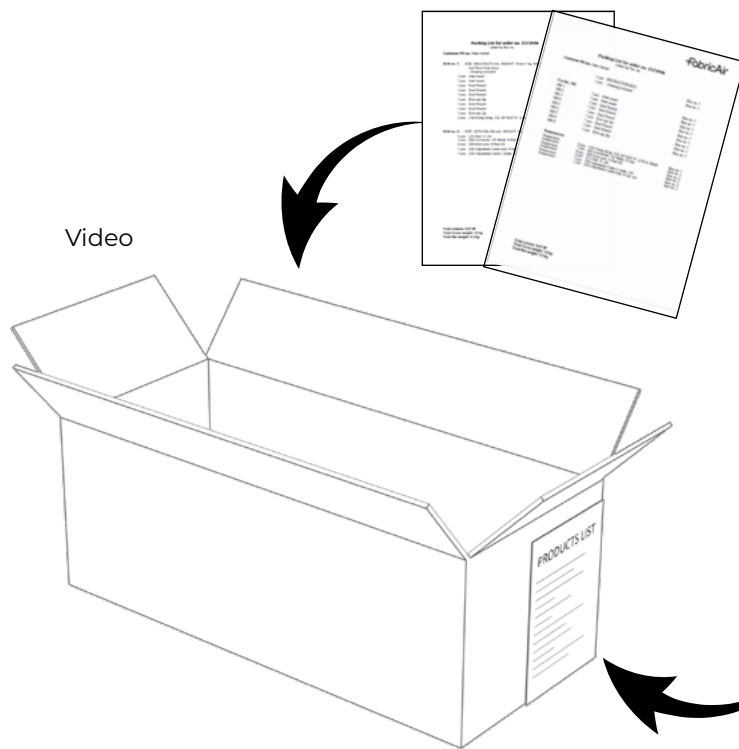
Type 06 suspension is compatible with classic ducts without shape retaining hardware.

Type 06 suspension is a rigid, double H-Rail suspension with aluminum rod supports connecting the H-Rail to the ceiling structure.

Content

1.0 OPENING PACKAGE	3
1.1 Understanding components table.....	4
1.2 Type 06 suspension components	5
2.0 SUSPENSION INSTALLATION	6
2.1 Mounting H-Rail.....	6
2.2 Connecting profiles.....	8
2.3 Branches.....	10
2.4 Detailed suspension installation	10
3.0 INSTALLING THE FABRIC.....	11
3.1 Connection to sheet metal part with fixing strap	11
3.2 Fixing straps.....	11
3.3 Installation of duct on H-Rail	12

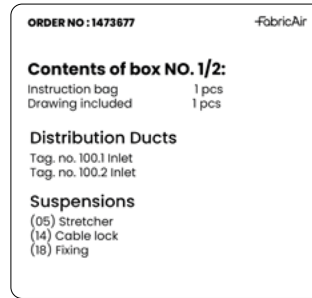
1.0 OPENING PACKAGE



Box 1 includes all project documentation:

- System Drawing(s)
- Installation Guide
- Packing List (by box)
- Packing List (by positions)

Box number and contents list visible on external box label.



FabricAir		
Packing List for order no. 1572946 Listed by Pos. no.		
Customer PO no.: Nate Verbal		
	1 pcs INSTRUCTION BAG	Box no. 1
	1 pcs - Drawing included	Box no. 1
Pos No. 100		
100.1	1 pcs Inlet round	Box no. 1
100.2	1 pcs Inlet round	Box no. 1
100.3	1 pcs Duct Round	Box no. 1
100.4	1 pcs Duct Round	Box no. 1
100.5	1 pcs Duct Round	Box no. 1
100.6	1 pcs End cap Zip	Box no. 1
100.7	1 pcs Duct Round	Box no. 1
100.8	1 pcs Duct Round	Box no. 1
100.9	1 pcs End cap Zip	Box no. 1
Suspensions		
Suspension	2 pcs (18) Fixing Strap, Y/Z, Ø710/27.9", 2.46 m, Black	Box no. 1
Suspension	1 pcs (06) Connector, SS Metal, H-Rail	Box no. 2
Suspension	6 pcs (08) End Lock, H-Rail SS	Box no. 2
Suspension	4 pcs (21) Rail, H, 2m	Box no. 2
Suspension	7 pcs (38) Adjustable Cable 2 meter, SS	Box no. 2
Suspension	7 pcs (36) Adjustable Cable lock, H-rail, SS	Box no. 2
Total volume: 0.07 M ³ Total Gross weight: 12 kg Total Net weight: 9.3 kg		

FabricAir		
Packing List for order no. 1572946 Listed by Box no.		
Customer PO no.: Nate Verbal		
BOX no. 1:	SIZE: 590x210x275 mm, WEIGHT: Gross 7 kg, Net 5.9 kg.	
	INSTRUCTION BAG - Drawing included	
	1 pcs Inlet round	Tag No. 100.1
	1 pcs Inlet round	Tag No. 100.2
	1 pcs Duct Round	Tag No. 100.3
	1 pcs Duct Round	Tag No. 100.4
	1 pcs Duct Round	Tag No. 100.5
	1 pcs End cap Zip	Tag No. 100.6
	1 pcs Duct Round	Tag No. 100.7
	1 pcs Duct Round	Tag No. 100.8
	1 pcs End cap Zip	Tag No. 100.9
	2 pcs (18) Fixing Strap, Y/Z, Ø710/27.9", 2.46 m, Black	Suspension
BOX no. 2:	SIZE: 2070x150x100 mm, WEIGHT: Gross 5 kg, Net 3.45 kg.	
	4 pcs (21) Rail, H, 2m	Suspension
	1 pcs (06) Connector, SS Metal, H-Rail	Suspension
	6 pcs (08) End Lock, H-Rail SS	Suspension
	7 pcs (36) Adjustable Cable lock, H-rail, SS	Suspension
	7 pcs (38) Adjustable Cable 2 meter, SS	Suspension
Total volume: 0.07 M ³ Total Gross weight: 12 kg Total Net weight: 9.3 kg		

- There are two packing lists – by box and by position. Each box may contain either suspension components or ducting. Each duct section/component has a Tag number (Tag No. XXX.X). Suspension elements have part ID numbers. Example: (21) H-Rail, 2 m. In this case, (21) is part ID.
- Tag numbers are marked in assembly sequence. Assembly of ducting should start with Tag No. XXX.1 and continue accordingly.

1.1 Understanding components table (located on system drawing)

COMPONENTS								
Tag#	Fabric	Color	Flow model			Suspension		
			Primary	Placement	Secondary	Type	Strap length	Material
350404600025	Combi 70	Black 3004			FabFlow		0	GV
100.1	Combi 70	Black 3004			FabFlow		0	GV
100.2	Combi 70	Black 3004	SonicFlow SonicFlow SonicFlow SonicFlow SonicFlow	2:00 3:00 4:00 5:00 6:00	FabFlow	Type 01 AiO	50 mm [2"]	GV

THE CHART SHOWN ABOVE IS AN EXAMPLE

Tag#: the unique number for that section, this is the identifying/unique number for that section.

Tag 3504..##..25: this part is the FabricAir flow straightener that helps manage turbulence and can be zipped into any joint.

Fabric: the fabric selected for this project.

Color: the color selected (standard meaning to select from the standard color chart for that fabric).

Flow model primary: primary dispersion method.

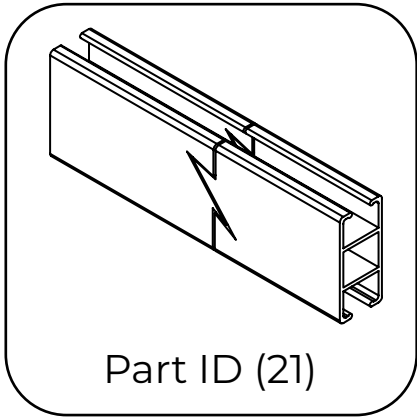
Placement: position of the holes; direction of airflow based on looking in the direction of airflow with the air hitting you from behind.

Flow model secondary: FabFlow for permeable fabrics.

Suspension type: the suspension model selected for the project.

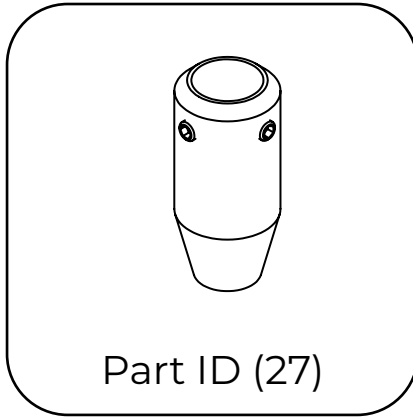
Strap length: the length of the strap from the top of the duct to the suspension.

1.2 Type 06 suspension components (located on packing lists)



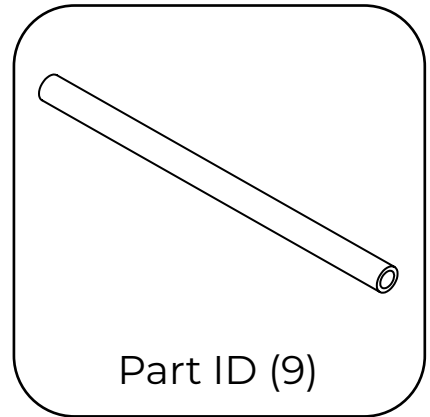
Part ID (21)

H-Rail profile



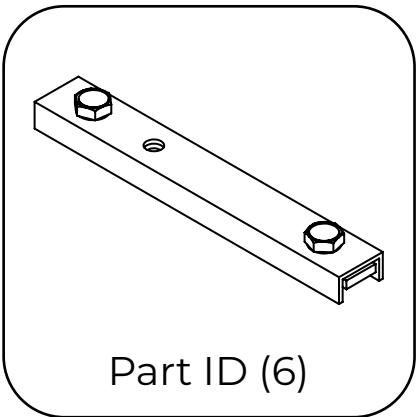
Part ID (27)

Rod end connector



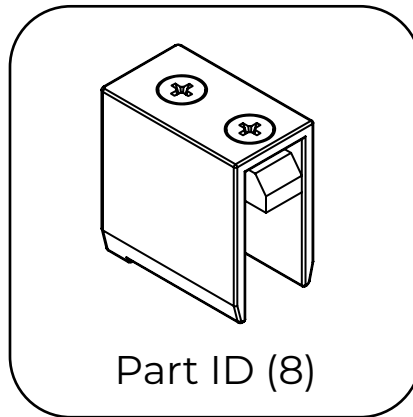
Part ID (9)

Rod



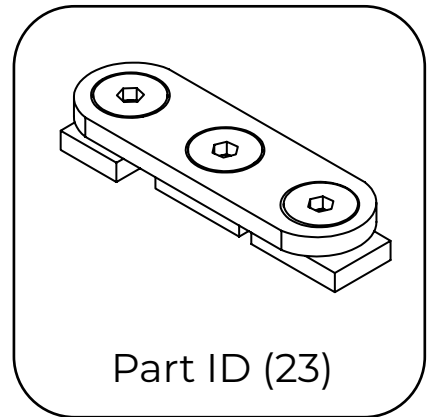
Part ID (6)

H-Rail connector



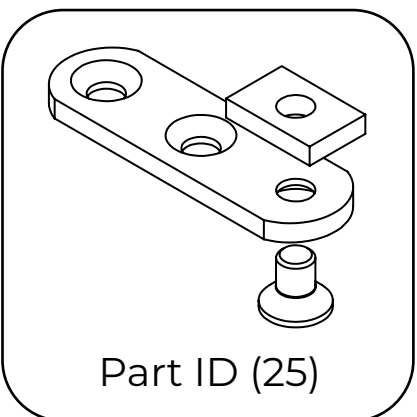
Part ID (8)

H-Rail endcap



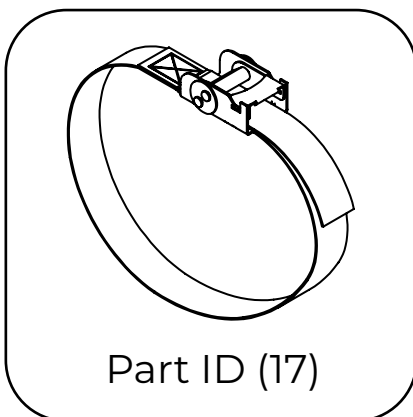
Part ID (23)

H-Rail tee connector



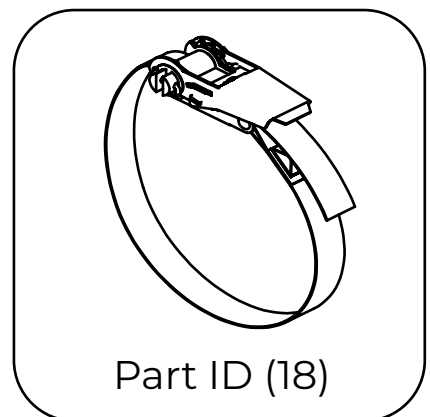
Part ID (25)

H-Rail ceiling
connector



Part ID (17)

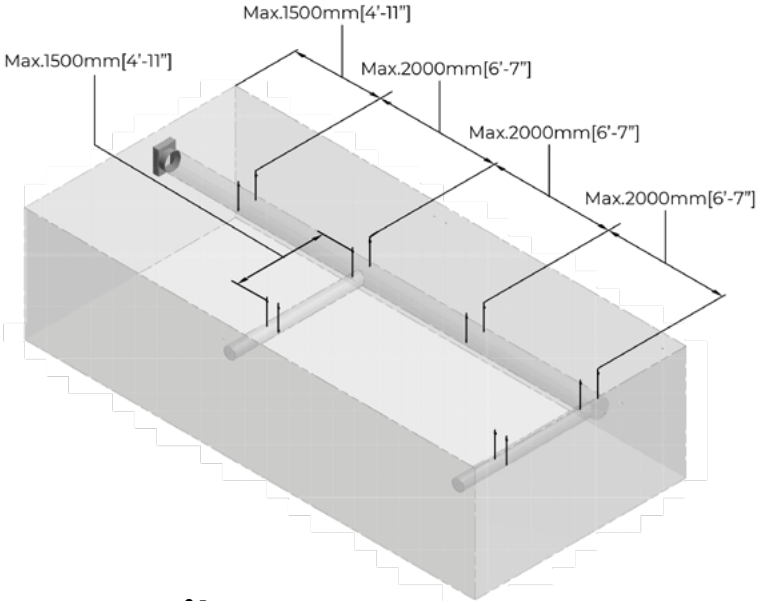
Fixing strap for duct
 $\varnothing < 508$ mm [20"]



Part ID (18)

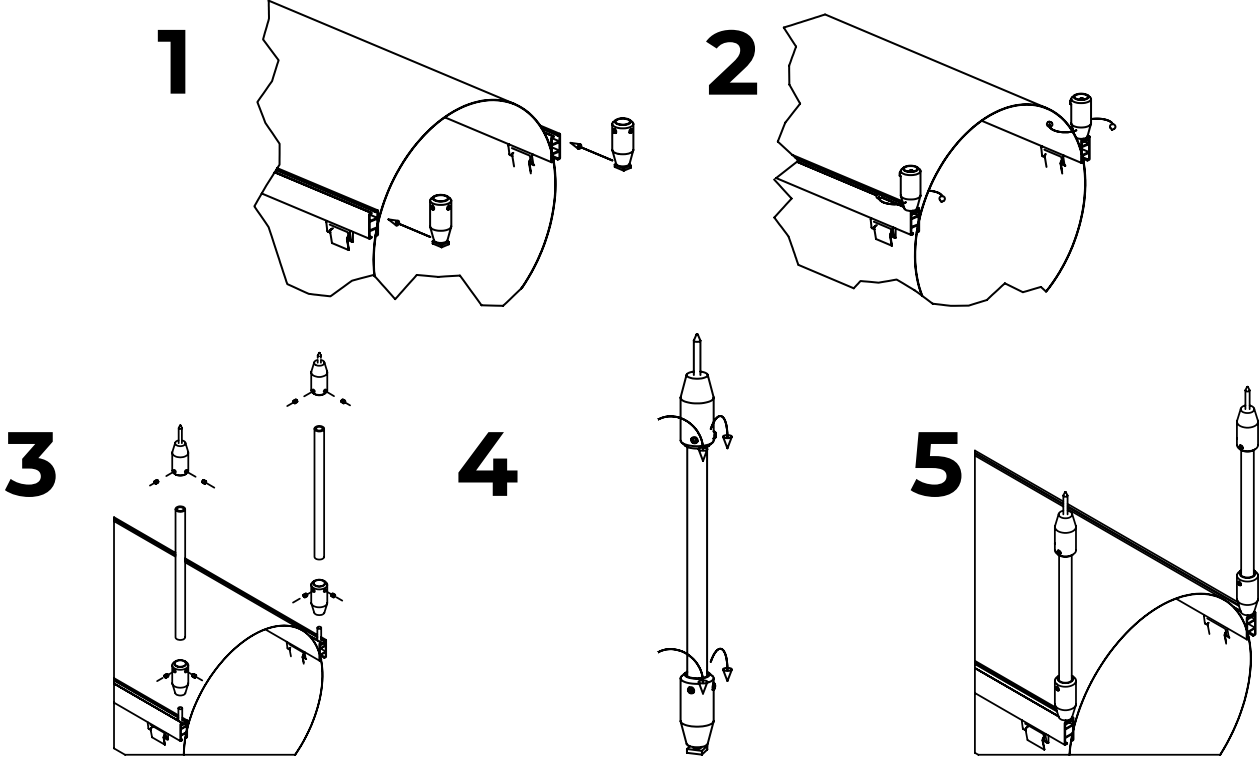
Fixing strap for duct
 $\varnothing > 508$ mm [20"]

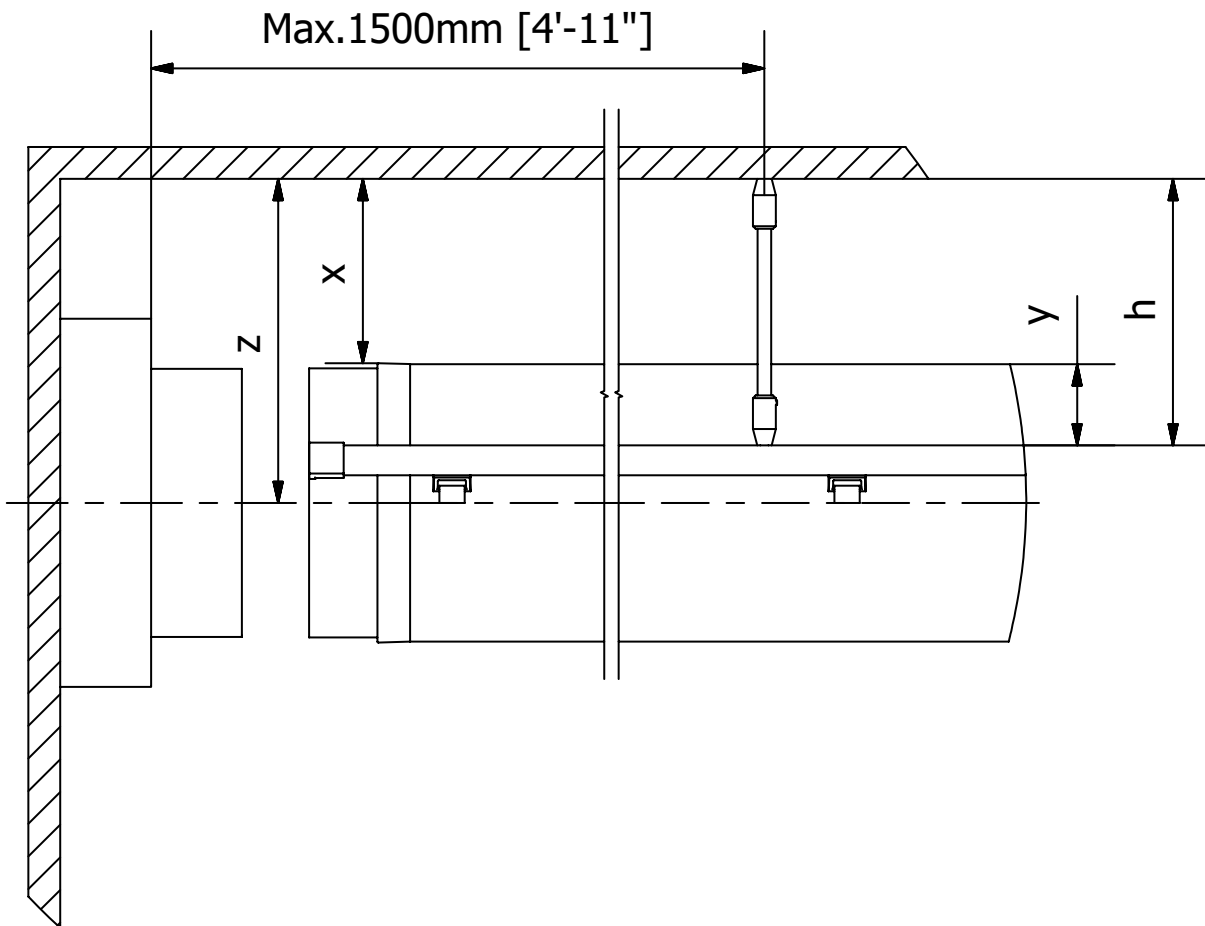
2.0 SUSPENSION INSTALLATION



Video

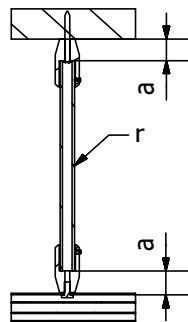
2.1 Mounting H-Rail





Rods are fastened to each connector using set screws (3 mm hex key).

Aluminum rods must be cut to length on-site by the contractor/installer.



$$r = h - 2a$$

$$h = x - y$$

$$x = z - 1/2 d$$

$$a = 22 \text{ mm}$$

$$Y \text{ classic} = 63 \text{ mm [2.5"]}$$

$$Y \text{ all-in-one} = 83 \text{ mm [3.25"]}$$

Strap lengths may be extended on Type 06 suspension, as needed to allow ducts to hang more than 50 mm [2"] below ceiling.

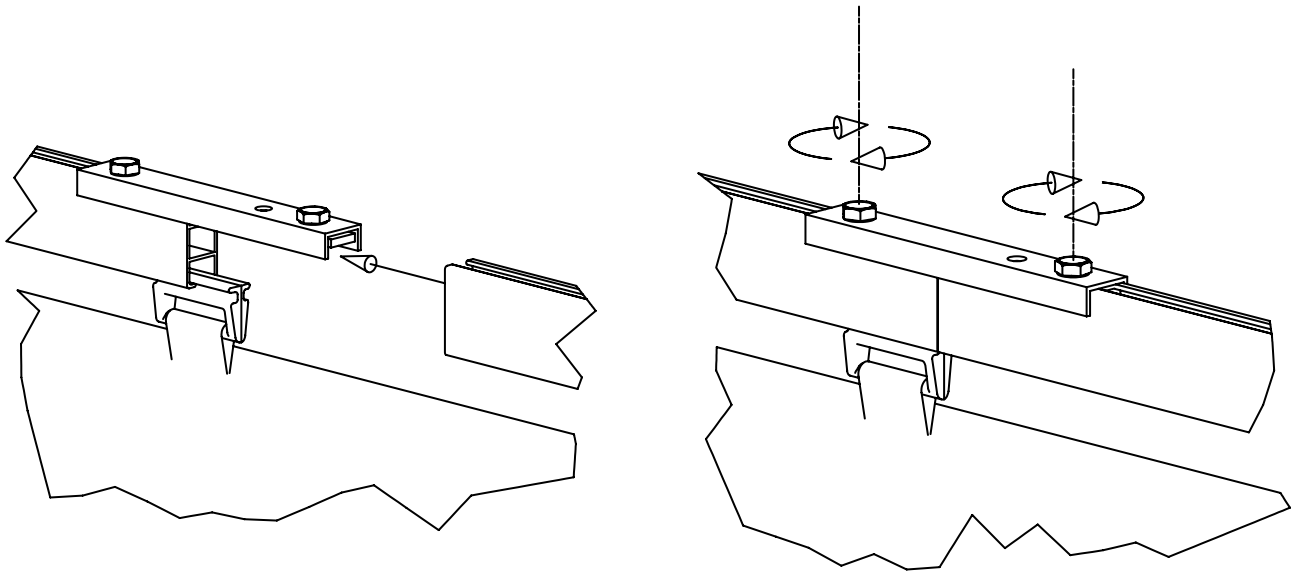
NOTE! Hardware quantities for vertical hangers are calculated based on 2 m [6'-7"] spacing. Installer must request additional hardware if vertical anchor spacing is to be less than 2 m [6'-7"].

Standard strap length for the 3 possible options:

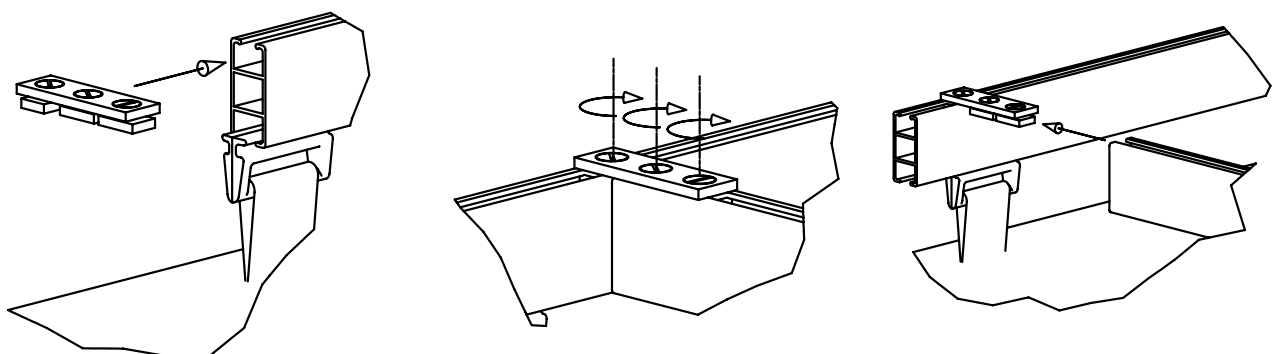
classic: $S = 30 \text{ mm [1.2"]}$ minimum length;

All-in-One / Internal 360° Hoops: $S = 50 \text{ mm [2"]}$ minimum length.

2.2 Connecting profiles



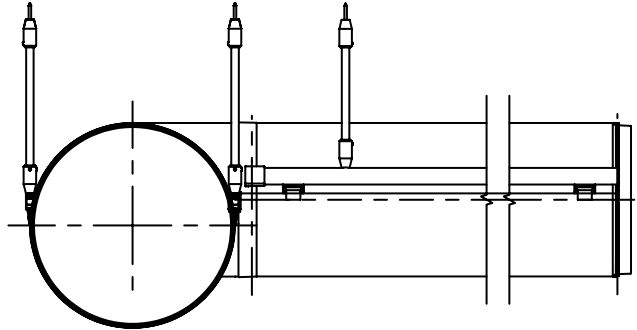
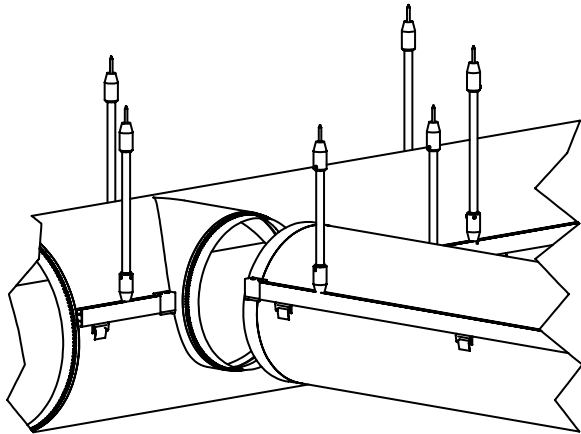
- H-Rail pieces are joined together using a metal connector.
- Duct will have sliders to slide into H-Rail at appropriate locations.
- Systems with elbows are provided with factory-bent H-Rail sections, to match the exact angle necessary for supporting the elbow.



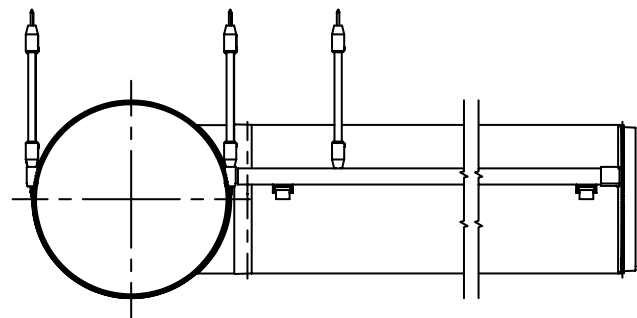
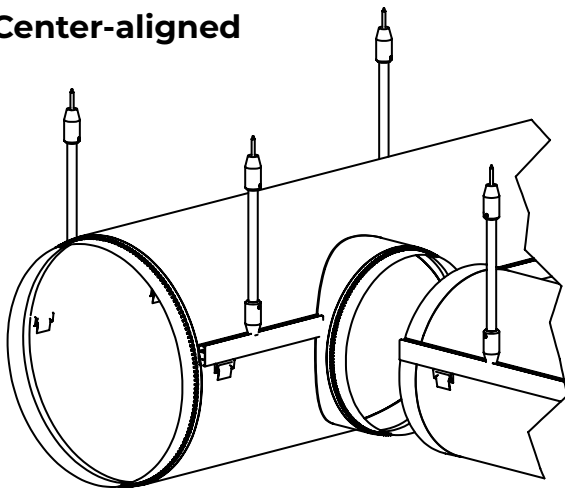
- H-Rail pieces are joined together using a metal connector.
- Connector secures to H-Rail with hex-bolts (3 mm).
- Duct will have sliders or a bulb edge to slide into H-Rail at appropriate locations.
- Rails can be bent to the exact angle needed to suit elbows in FabricAir duct system.
- Aluminum rods must be cut to length on-site by the contractor/installer.

2.3 Branches

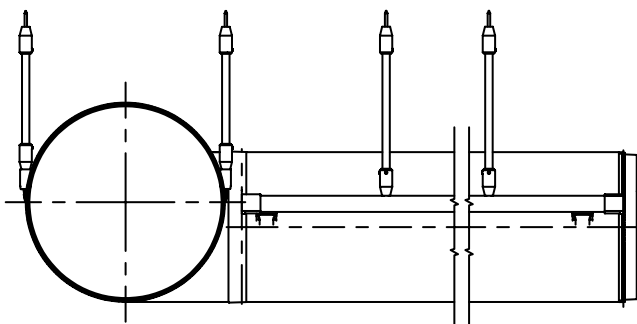
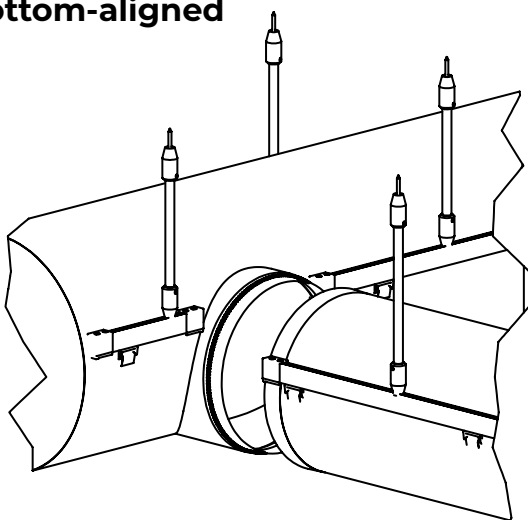
Top-aligned



Center-aligned



Bottom-aligned

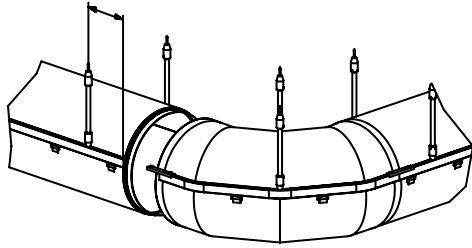


Multiple alignment can also be accomplished with extended straps.

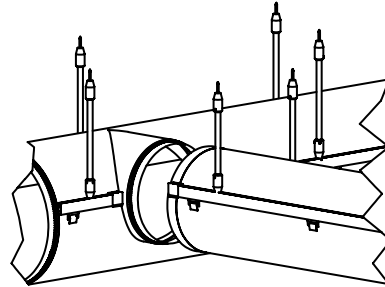
Extended straps must be decided upon prior to manufacturing/order placement

2.4 Detailed suspension installation

Use QR code for more detailed information for each type.



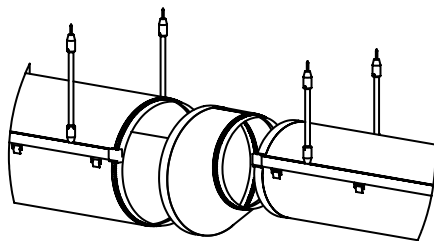
Bendings and elbows
All degrees and sizes



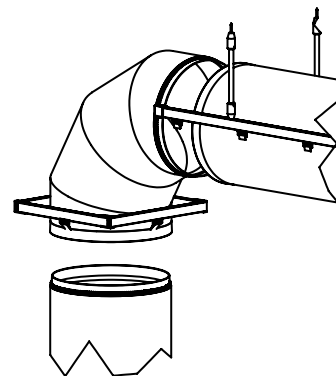
Branches
Top/center/bottom aligned

Drawings

Drawings



Reductions
Top/center/bottom aligned



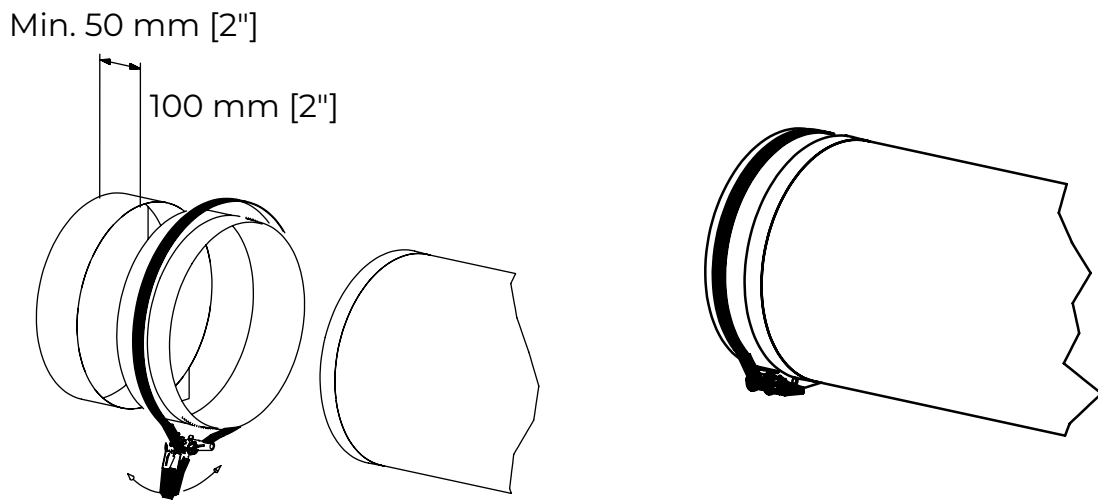
**Vertical duct
suspension methods**

Drawings

Drawings

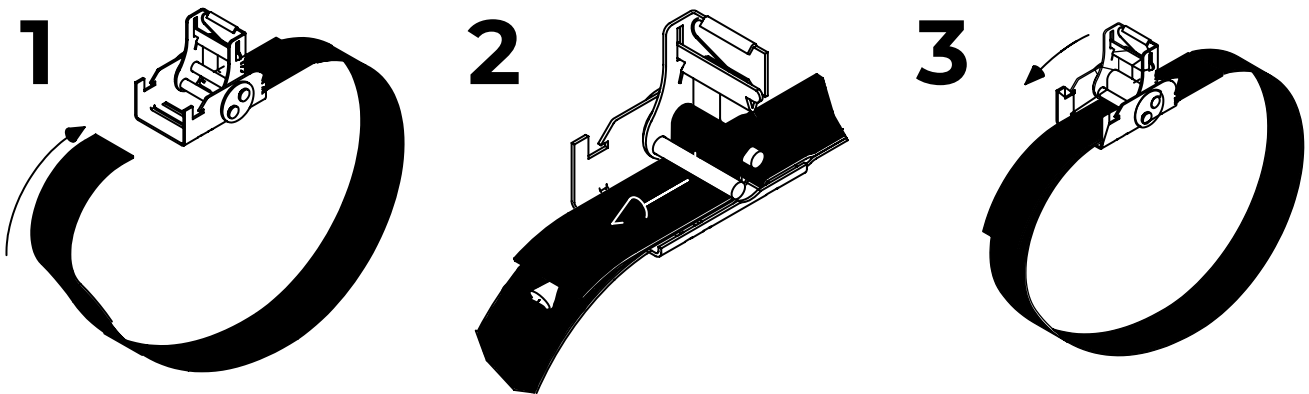
3.0 HANGING THE FABRIC

3.1 Connection to sheet metal part with fixing strap

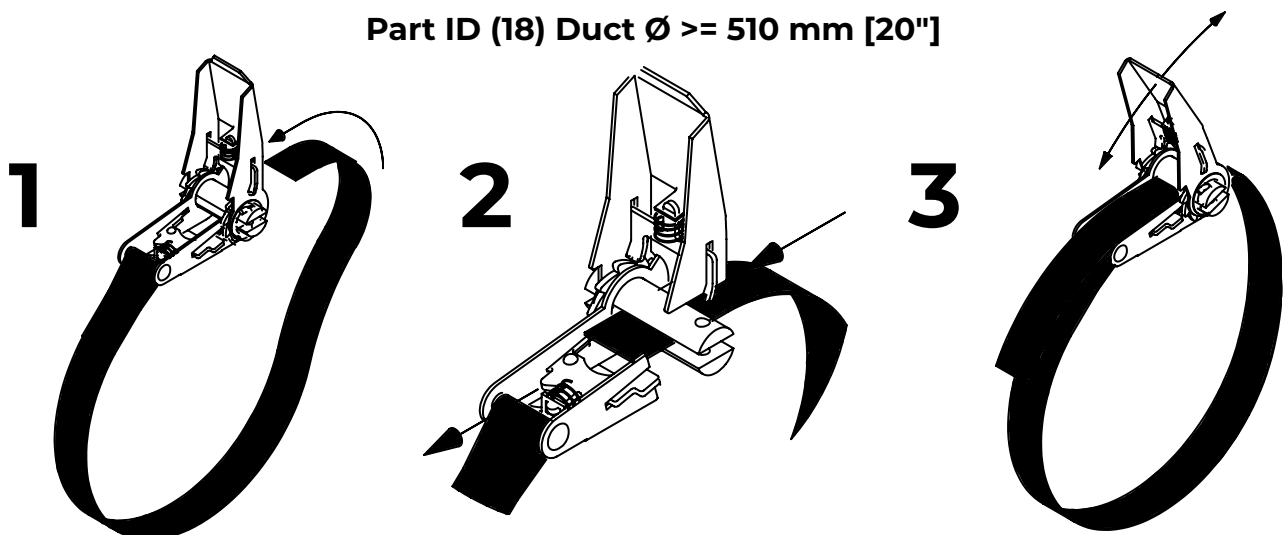


3.2 Fixing straps

Part ID (17) Duct $\varnothing < 510$ mm [20"]



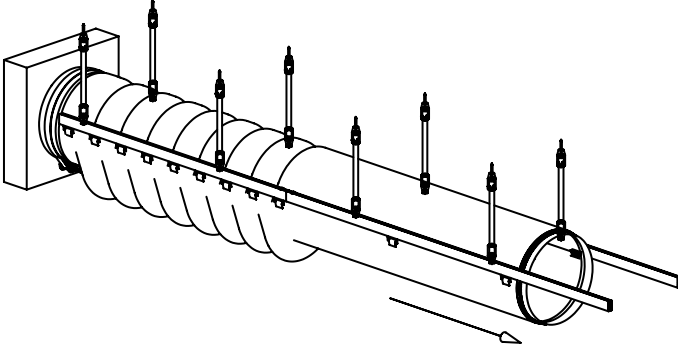
Part ID (18) Duct $\varnothing \geq 510$ mm [20"]



3.3 Installation of duct on H-Rail

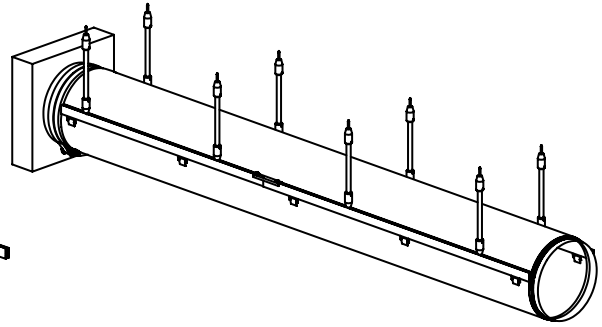
1

Hang ducting first



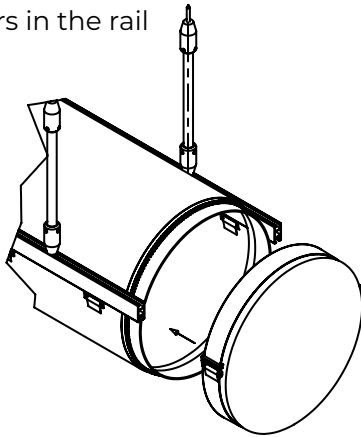
2

Stretch the duct



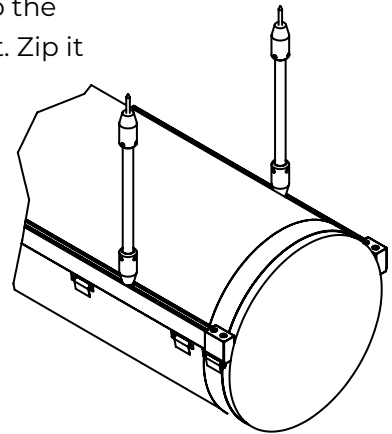
3

Insert hangers in the rail



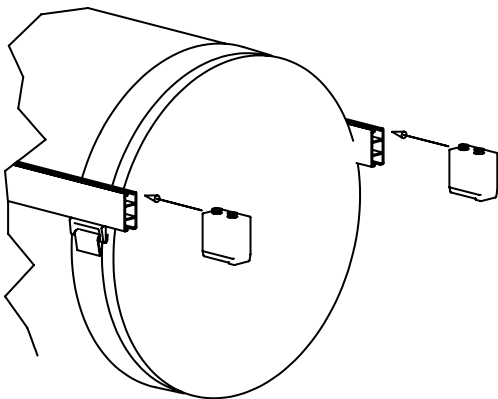
4

Slide endcap to the end of the duct. Zip it



5

Secure duct by inserting H-Rail endcap



6

Secure H-Rail endcap by turning bolt clockwise

